



BALLYMONEY
BOROUGH COUNCIL

“To support the underpinning of a vibrant community that will enhance civic pride and impact positively on economic development and environmental sustainability”

Ballymoney Borough Council's Community Support Plan 09-11

***Ballymoney Borough Council
Community Support Plan
2009-11***

July 2009

Contents



| | |
|--|-----------|
| Purpose of Community Support Plan | 3 |
| Background to Council | 4 |
| Overview of Community Support Services | 7 |
| Social Need Assessment of Services and Facilities | 10 |
| How Council Contribute to Community Services | 20 |
| Review of other Community Provision | 31 |
| <i>Prioritisation of needs</i> | 36 |
| <i>Aims and Objectives</i> | 36 |
| <i>Managing the Community Support Plan</i> | 37 |
| <i>Resources for Implementation</i> | 37 |
| Action Plan | 38 |
| Contact Details | 39 |

Purpose of Community Support Plan

The Purpose and Origin of Community Support Plans

Local Community Support Plans are designed to help identify the community support needs of local communities throughout each Council District. In identifying local need it is important to recognise that a wide range of existing organisations are already active within the sector. The purpose of this Community Support Plan is to bring together those organisations and agencies that can contribute to meeting the needs of local communities. Although Ballymoney Borough Council is leading this initiative, Council alone cannot fulfill the actions contained within the action plan. It is therefore, incumbent upon all local support agencies actively involved within the community development field, to fully play their part in addressing the range of issues highlighted by this Community Support Plan.

Origin

Community Support Plans have their origins in the review of the Borough Councils' community services programme *Beyond the Centre* undertaken by the Department for Social Development in January 2000. Community support is taken to 'describe the processes and activities through which District Councils stimulate and enable groups of people to express their needs, support them in their collective action and assist them with projects and schemes as part of the overall objective of providing civic leadership' (section 6.4).

A Community Support Plan is an effective and comprehensive management plan for the relevant actions to be undertaken by a Council with its own resources and those available under the Community Support Programme (funded by the Department for Social Development). A Community Support Plan should therefore describe how a council intends to utilise resources.

Plans will result in agreed statements of local need arrived at through consultation and partnership. Communities will benefit through better assessment of their need, better targeting of resources, improved use of community facilities and increased support for local community groups. The plan will provide the Department for Social Development, Borough Council and local communities with a written statement of the strategy, action plan and monitoring arrangements for the utilisation of these resources.

The Department for Social Development in *Beyond the Centre* (section 6.16) highlighted the following characteristics of good practice in relation to the production of Community Support Plans:

- **Comprehensive:** Plans should look at the community as a totality, recognise that problems are inter-linked and understand that there is a need for integration and co-ordination.
- **Examine needs and resources:** Plans should address not only needs but also the resources available for community use, including financial resources, the skills and commitment to local people, the network of organisations that exist and other potential sources of support.

- **Focus on community:** Defined in relation to a particular geographical area and for the purposes of the programme, it will also be appropriate to include communities of interest.
- **Demonstrate active community involvement:** In keeping with 'best value' principles, community involvement is necessary to ensure that the plans address community need and help develop community commitment and self-confidence.
- **Lead to action to improve the quality of community life:** Plans should list necessary actions and meaningful targets and incorporate a shared commitment to implement them.

Background to Council

General Overview

Ballymoney Borough covers an area of 161 sq miles and is predominantly rural in character. It is bounded to the west by the river Bann and to the east by the uplands of the Antrim plateau. The market town of Ballymoney is its main centre, with a number of small villages in the rural hinterland. The area is in a central location in the North East of Northern Ireland and is in the Antrim Coast and the Glens area of outstanding natural beauty. The valley of the lower Bann forms part of the Borough's western boundary. These are areas of great natural beauty and wildlife interest and gives numerous opportunities for outdoor recreation, including water sports, and coarse and game angling. The area has much rich farmland as well as hill areas within its boundary.

Ballymoney Borough Council area is home to a population of 29,225 (2006 Census Figures) representing 1.7% of the total population of Northern Ireland (1,724,408). The area overall is not densely populated, with only 70 people being recorded per square kilometre opposed to 128 people per kilometre for Northern Ireland overall.

As an historic market town Ballymoney has seen an expansion in the period since the formation of Ballymoney Borough Council in 1973. However one third of the Borough population continues to live in the town of Ballymoney with the remainder of the population living in rural areas or in the boroughs many villages.

Ballymoney Borough Council's Mission is: -

"... to improve the quality of life for the citizens of Ballymoney Borough."

There are three departments within the Council led by the Chief Executive. These are: -

- Office of the Chief Executive
- Central and Leisure Services Directorate
- Borough Services Directorate

The Central and Leisure Services Directorate has responsibility for the overseeing of the Community Support Plan and works in partnership with the Office of the Chief Executive and Borough Services Directorate to deliver Council's corporate objectives. In particular Council's Community Support Plan is instrumental in helping realise the following Corporate Objectives:

“To encourage active citizenship and community participation”

“To ensure that acceptable, accessible and affordable local services are provided in a way that meets people's needs.”

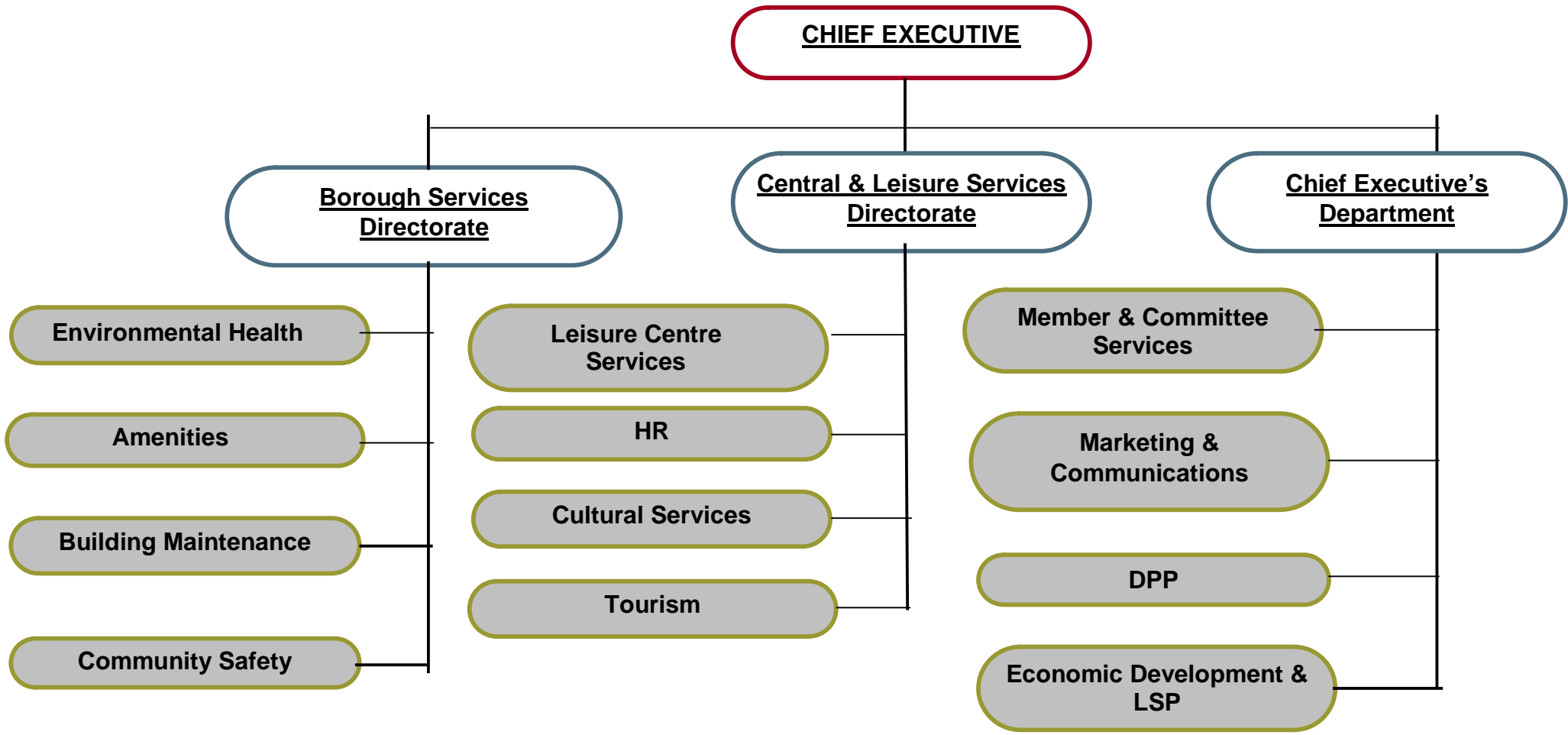
Organisation

Primary responsibility for the Community Support Plan falls under the remit of the Central and Leisure Services Directorate. The Director of Central and Leisure Services is charged with overseeing the main activities within community support but no full time Community Support Officer position currently exists.

Within Ballymoney Borough Council, Community Support spans across all three Directorates. Responsibilities include: -

- General Community Development work.
- Advice and grant support to the voluntary and community sectors
- Management and Delivery of Councils Good Relations Programme
- Development and funding for Community Festivals and aspects of Council's Major Events Programme
- Development and grant support for Advice Services
- Management of Council-provided community facilities.
- The development of both grant-aided and Council-provided Community Centres
- Training provision

The staffing structure illustrated below highlights the three Directorates and the various departments, which make an impact on Community Support.



Council employee approximately 130 people and operate out of 6 locations.

Overview of Community Support Services

Description of Ballymoney Borough Council's Current Community Services Programme

Community development within Ballymoney Borough Council is an essential underpinning strategy that affects the long-term stability and economic success of the Borough. Community development and support has traditionally been facilitated through financial support in the form of grant aid from Council to the sector. A core element of Council business over several years has been the provision of support for Borough-wide advice provision through grant giving and the limited provision of facilities for community development initiatives and activities.

Ballymoney Borough Council believes that arts, heritage, sports, play and health are important ways of engaging the community and developing the capacity of individuals, thus ultimately improving the quality of life for those living within the Borough.

Community Services incorporates the following elements:

- Advice Centre Funding
- Events and Festivals Grants
- Good Relations
- Community Development
- Grant Assistance to the Voluntary and Community Sector.
- Community Sport
- Community Arts Service
- Museums Programme
- Economic Development
- Local Strategy Partnership
- Community Safety
- District Policing Partnership
- Amenities
- Training Programmes

Staffing

The Department is headed by the Director of Central and Leisure Services.

Buildings

Through its directorates, Council manage the following community facilities: -

- The Social Centre
- Rasharkin Community Centre
- Killyrammer Community Centre
- Joey Dunlop Leisure Centre

- Ballybogey Community Centre

In addition Council has supported the following voluntary run community resources through small grant provision under the Good Relations Programme:

- Ballymoney Resource Centre
- WAVE Trauma Centre

The range of activities at each centre varies, but all offer opportunities for cross community engagement and support. The Council run centres are usually available for casual and long-term bookings opening hours are varied, Monday to Saturday. The centres facilitate a wide range of activities including: -

- Community based activities
- Senior Citizens Club
- Pre-School Playgroup
- Youth Activities
- Community Arts and Drama
- Sporting facilities

Grant Aid

The Central and Leisure Services Department allocates grants across three main categories namely: -

- Grants to Voluntary/Community Groups
- Events and Festivals
- Advice Centre Funding

The Central and Leisure Services Department has detailed guidelines for the grant application process. These guidelines include the application process, selection process and appeals process. There is one main advice agency funded by Council namely, Coleraine and District Citizens Advice Bureau.

Detail of Services Provided

Community and Voluntary Sector in Ballymoney Borough

Ballymoney Borough Council area has approximately 60 community/voluntary sector groups registered on the Council database.

The type of group most commonly found in Ballymoney Borough Council area are Community Development groups (28%) followed by Other Interest groups (24%), Play groups (19%), Youth groups (17%) and older peoples groups (13%).

Resource Analysis

Community Services has an average budget of £73,908 to undertake direct community development activities i.e. management, provision of community centres, community

development support, grant giving to advice agencies. This is because approximately £8,357 (on average each year) is charged to Community Services as Capital Financing Costs. Capital Financing Costs are basically the repayment of loans against Council owned buildings within Community Services

The highest percentage of Community Services' gross expenditure is allocated to the provision of community centres, accounting for £67,077 on average over the two-year period 2007/08 and 2008/09.

The second highest level of spend is for provision of Community Services Administration, generally, accounting for an average of £10,439 per year.

Community Services received £34,943 from DSD for the period 2007/08, and £34,943 for the period 2008/09.

Community Centre Provision

The average gross expenditure on community centres by Community Services is £67,077, or 90% of the overall departmental budget. This budget supports 4 centres as outlined previously.

The highest level of expenditure per centre is for Rasharkin Community Centre, which has an average yearly expenditure of £44,244 or 66% of total expenditure on community centres.

It should be noted that Council allocated on average per year £18,629 or 53% of the incoming DSD Community Support Grant to offset costs for the above centres.

Grant Provision

Through Community Services Council provides grant aid to advice services, this grant is by far the highest level of funding awarded to a voluntary sector organisation. On average over the period 2008-09 Council awarded £18,000 per year to Coleraine and District Citizens Advice Bureau to provide advice services throughout the Borough. This figure represents on average 26% of the available community services budget to Ballymoney Borough Council.

Council also provides additional grant aid to community groups to promote Good Relations throughout the Borough.

Advice Services

Ballymoney Borough Council currently funds one advice centre, Coleraine and District Citizens Advice Bureau.

Coleraine and District Citizens Advice Bureau provide a service on three days per week in Ballymoney Town Hall. Outreach provision is not currently available however; a Home Visiting service to the housebound is available upon request.

Ballymoney CAB provides a further service through telephone advice, making the service more accessible to vulnerable groups where there is no access to public transport.

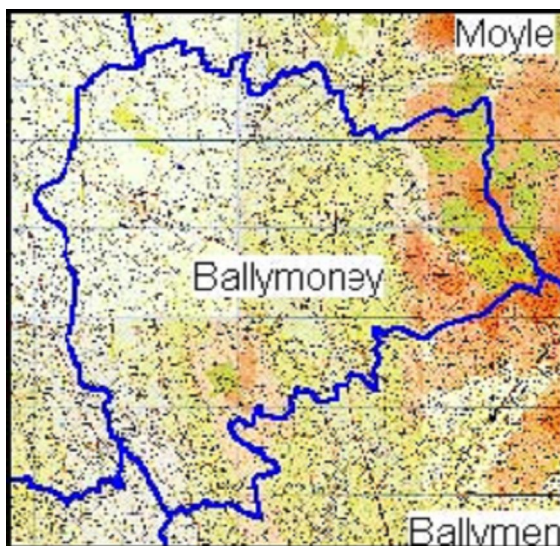
The level of funding to the Ballymoney CAB for 2007/08 and 2008-09 was £18,000 and £18,500 with the allocation for 09/10 estimated at £18,500

Social Need Assessment of Services and Facilities

Socio Economic Data

Geography

Ballymoney Local Government District (LGD) falls within the Northern Health and Social Services Board and the North Eastern Education and Library Board.



Demography

At the time of the census in 2001 the resident population of Ballymoney LGD was 26,894, making up 1.6% of the Northern Ireland population. The mid 2007 estimated population was 29,741. Below is a summary breakdown of the demographics of Ballymoney Local Government District as at 2001.

| Summary Comparisons | Ballymoney LGD | Northern Ireland |
|--|----------------|------------------|
| Census 2001 unless otherwise stated | | |
| Resident population | 26,894 | 1,685,267 |
| Mid 2007 Estimated Population | 29,741 | 1,759,148 |
| % persons under 16 years old | 23.7 | 23.6 |
| % persons aged 60 and over | 18.0 | 17.6 |
| % male | 49.5 | 48.7 |
| % female | 50.5 | 51.3 |

| Summary Comparisons | Ballymoney LGD | Northern Ireland |
|---|----------------|------------------|
| Census 2001 unless otherwise stated | | |
| % Catholic Community Background | 31.9 | 43.8 |
| % Protestant and Other Christian (including Christian related) Community Background | 66.2 | 53.1 |
| Average age of population | 36.1 | 35.8 |
| Population density (persons per hectare) | 0.64 | 1.19 |
| % persons 16 and over single (never married) | 30.8 | 33.1 |
| Administrative Data | | |
| Births (2007) | 385 | 24,451 |
| % of births to unmarried mothers (2007) | 35.6 | 37.9 |
| Total Period Fertility Rate (2005-2007) | 1.97 | 1.94 |
| Deaths (2007) | 228 | 14,649 |
| Standard Mortality Ratio for all ages (2005-2007) | 89 | 100 |
| Standard Mortality Ratio for age 75 years and under (2000-2004) | 84 | 100 |
| % change Estimated population (2006-2007) | 1.8 | 1.0 |
| Projected Population 2019 (2006 based) | 34,896 | 1,901,033 |
| % of marriages at a Registrar's Office (2003) | 16.9 | 27.5 |

Datasets used: Census 2001: KS01 Usually Resident Population, KS02 Age Structure, KS04 Marital Status, KS07b Community Background (NISRA Census Office). Births 2007, Deaths 2007, Marriages 2003, Mid Year Estimates 2006, 2007. Population Projections 2006 based, Baby Names 2005 (NISRA Demography Branch) and Popular Names registered with a GP 2006 (CSA DHSSPS).

As can be seen, the **population of the Ballymoney area is estimated to have gone up by 10.59%** since the 2001 census as per the mid 2007 population estimate. Of the 2001 population, 23.7%, just 0.1% above the Northern Ireland level, is under the age of 16. While there are 0.4% more persons aged over 60 in Ballymoney LGD than in Northern Ireland.

49.5% of the Ballymoney residents are male compared with 48.7% in Northern Ireland, showing a more female dominated population in Northern Ireland.

The religious breakdown of Ballymoney differs slightly from that of Northern Ireland, being slightly more **Protestant and Other Christian Community Background orientated**, with 66.2% of the Ballymoney population classing themselves as such compared to 53.1% for Northern Ireland.

The average age of Ballymoney LGD residents at 36.1 years is **slightly higher than the Northern Ireland average age** of 35.8 years.

In Ballymoney LGD there were 385 births registered in 2007. In total **35.6% of births were to unmarried mothers**. The most popular baby names in 2005 were Jack and Ellie/Emma, compared to Jack and Katie for all NI.

The Total Period Fertility Rate (TPFR) is the average number of children that would be born to a cohort of women who experienced, throughout their childbearing years, the fertility rates of the calendar year(s) in

question. In western countries a TPFRR of about 2.1 is required to maintain long-term population levels, assuming no migration.

The Total Period Fertility Rate (TPFR) 2005-2007 in Ballymoney LGD was 1.97. This implies that **the population within Ballymoney LGD does not have the potential to maintain long-term population levels regardless of migration.**

There were 228 deaths in Ballymoney in 2007 equating to 1.56% of the 14,649 occurring in Northern Ireland in the same year.

The Standardised Mortality Ratio is a method of comparing mortality in different populations, while allowing for differences in the age structure of these populations. A value of 100 equals the average mortality for Northern Ireland, any value greater than 100 indicates above average mortality. Ballymoney LGD's SMR of 89 indicates a **below average mortality rate in comparison to Northern Ireland** between the years of 2005-2007. The Mortality rate for residents of Ballymoney aged 75 years and under, based on 2000-2004 data, was even further below the Northern Ireland average, with a value of 84.

Ballymoney LGD's **estimated population change for 2006-2007 was 1.8%**, 0.8% more of an increase than Northern Ireland's estimated population change of 1%. Indeed based on 2006 estimates, the population of Ballymoney is projected to rise to 34,896 by 2019, an increase of 29.8% on the 2001 population.

Deprivation - NIMDM 2005

The Northern Ireland Multiple Deprivation Measure 2005 (NIMDM 2005) was published in May 2005. The report identifies small area concentrations of multiple deprivation across Northern Ireland. The results for Ballymoney LGD are shown below. [Ranks range from 1 (most deprived LGD) to 26 (least deprived LGD)].

| LGD Scores and Ranks (NIMDM 2005) | LGD Score | LGD Rank |
|-----------------------------------|-----------|----------|
| Local Concentration | 622.78 | 25 |
| Extent | 1% | 25 |
| Income Scale | 5145 | 23 |
| Employment Scale | 2235 | 25 |
| Average of SOA ranks | 453.19 | 12 |
| Average of SOA scores | 18.48 | 13 |

Datasets used: Northern Ireland Multiple Deprivation Measure 2005

Ballymoney LGD has an Extent of 1%, this means that **1% of the Ballymoney population live in the most deprived Super Output Areas in Northern Ireland.**

The Income Scale shows that there are **5,145 people in Ballymoney LGD experiencing Income deprivation**, while the Employment scale shows that a total of **2,235 people in Ballymoney LGD experience employment deprivation**. On the Income scale Ballymoney LGD has a rank of 23 while on Employment scale Ballymoney has a rank of 25 out of 26 LGDs of the most deprived in this category.

On the Average SOA Rank measure Ballymoney LGD has a rank of 12 out of 26 LGDs. On the Income Scale measure Ballymoney LGD has a rank of 23 out of 26 LGDs.

Within Ballymoney LGD the **most deprived Super Output Area is Newhill** (ranked 254 in NI) and the **least deprived Super Output Area is Glebe** (ranked 749 in NI).

As illustrated in the previous table, the local concentration measure is the population weighted average of the ranks of a LGDs most deprived Super Output Areas (SOAs) that contain exactly 10% of the LGDs population. Ballymoney has a rank of 25 in this classification.

On the Average SOA Rank measure Ballymoney LGD has a rank of 12 out of 26 LGDs while on the Average SOA Score measure Ballymoney LGD has a rank of 13 out of 26.

B) At Ward level

In order to consider deprivation in a more detailed manner, the 2005 NI MDM study breaks down the Multiple Deprivation Measure into 7 indicators or domains. These include: Income, Employment, Health & Disability, Education, Skills & Training, Proximity to Services, Living Environment and Crime and Disorder and these are assessed and scored in relation to the prevalence of disadvantage present.

There are 16 Wards in the Ballymoney Borough and deprivation scores have been ranked in relation to their comparative position within the 582 total Wards within Northern Ireland. The table overleaf illustrates all 16 Wards in the Ballymoney Borough in terms of their individual standing in relation to the other Wards in Northern Ireland with regard to their overall multiple deprivation as well as the 7 aforementioned domains. Those highlighted in yellow fall within the top 20% of the most deprived wards in Northern Ireland in the respective categories.

| Wards | Multiple Deprivation Measure | Income Domain | Employment Domain | Health Deprivation and Disability Domain | Education, Skills and Training Domain | Proximity to Services Domain | Living Environment Domain | Crime and Disorder Domain |
|---------------------|------------------------------|---------------|-------------------|--|---------------------------------------|------------------------------|---------------------------|---------------------------|
| Ballyhoe and Corkey | 190 | 277 | 416 | 356 | 130 | 3 | 114 | 561 |
| Benvardin | 204 | 174 | 224 | 298 | 198 | 132 | 152 | 371 |
| Carnany | 240 | 196 | 168 | 274 | 192 | 294 | 275 | 434 |
| CloughMills | 332 | 387 | 442 | 376 | 212 | 55 | 201 | 502 |
| Dervock | 376 | 404 | 343 | 305 | 268 | 201 | 265 | 460 |
| Dunloy | 316 | 372 | 419 | 384 | 209 | 41 | 248 | 555 |
| Fairhill | 355 | 333 | 345 | 453 | 100 | 287 | 298 | 503 |
| Glebe | 507 | 451 | 409 | 516 | 475 | 408 | 414 | 423 |
| Killoquin Lower | 291 | 307 | 302 | 366 | 219 | 99 | 205 | 566 |
| Killoquin Upper | 274 | 272 | 390 | 478 | 115 | 80 | 116 | 513 |
| Knockaholet | 276 | 396 | 358 | 335 | 246 | 48 | 30 | 524 |
| Newhill | 159 | 124 | 154 | 339 | 54 | 377 | 77 | 458 |
| Route | 232 | 198 | 129 | 226 | 354 | 387 | 225 | 227 |
| Seacon | 386 | 360 | 344 | 355 | 309 | 198 | 346 | 498 |
| Stranocum | 271 | 296 | 401 | 389 | 164 | 43 | 185 | 515 |
| The Vow | 408 | 385 | 430 | 396 | 307 | 137 | 395 | 558 |

As can be seen from the **Multiple Deprivation Measure**, Ballymoney does not have a single ward falling in the 20% of most deprived wards in Northern Ireland. The most deprived ward in the Ballymoney LGD is Newhill followed by Ballyhoe and Corkey, ranked 159 and 190 placing them in the top end of the 20-30% bracket and lower end of the 30-40% bracket respectively. The most affluent ward in Ballymoney LGD is Glebe ranked at 507 placing it in the high end of the 80-90% bracket. With The Vow being the next most affluent ward with a rank of 408 placing it in the 70-80% bracket. The mean rank for wards falling in the Ballymoney LGD in terms of the multiple deprivation is 301.

The purpose of the **Income Domain** is to capture the extent of income deprivation in an area. None of the wards in the Ballymoney district fall within the 20% of most deprived wards in Northern Ireland. With Newhill

ranked 124 it comes closest, falling at the low end of the 20-30% bracket, followed by Benvardin with a rank of 174. The least deprived areas in Ballymoney LGD in terms of income are Glebe with a rank of 451 followed by Dervock with a rank of 404, placed in the 70-80% and 60-70% brackets respectively. The mean rank for wards falling in the Ballymoney LGD in terms of Income is 308.

The **Employment Domain** seeks to measure enforced exclusion from the world of work. The domain does not seek to capture income deprivation to which joblessness leads, since this is tackled in the Income Deprivation Domain. 'Employment deprived' are thus defined as those who want to work but are unable to do so through unemployment, sickness or disability. None of the wards in Ballymoney LGD fall in the 20% of most deprived wards in Northern Ireland. Route is ranked lowest at 129 followed by Newhill at 154. The least deprived wards in terms of Employment are Clogh Mills and The Vow ranked 442 and 430 respectively placing them in the 70-80% bracket. The mean rank for wards falling in the Ballymoney LGD in terms of Employment is 330.

The **Health Deprivation and Disability Domain** identifies areas with people whose quality of life is impaired by poor health and/or disability or whose life is cut short by premature death. The ward of Route is the most deprived ward in Ballymoney LGD in relation to health ranking at 226 placing it at the upper end of the 30-40% bracket. The least deprived ward is Glebe ranked at 516 placing it in the 80-90% bracket. The mean rank for wards falling in the Ballymoney LGD in terms of Health Deprivation and Disability is 365.

The **Education, Skills and Training Domain** measures, in as consistent a way as possible, the key educational characteristics, relating to two separate sub domains; lack of qualifications among adults and lack of access and attainment among children and young people, in the local area that might contribute to the overall level of deprivation and disadvantage. The wards of Fairhill, Killoquin Upper and Newhill all fall in the 20% of most deprived wards in Northern Ireland in terms of Education, Skills and Training with Newhill ranked lowest at 54 falling in the bottom 10%. The least deprived ward is Glebe with a rank of 475 placing it in the 80-90% bracket. The mean rank for wards falling in the Ballymoney LGD in terms of Education, Skills and Training is 222.

The **Proximity to Services Domain** measures the extent to which people have poor geographical access to certain key services, measured in terms of road distance to the nearest services. 7 out of the 16 wards in Ballymoney LGD fall in the 20% of most deprived wards in Northern Ireland in relation to proximity to services, with 5 of those wards falling in the bottom 10%. Ballyhoe and Corkey with a rank of just 3 is surpassed in poor access to key services by just 2 of the 582 wards in Northern Ireland. Glebe with a rank of 408 has the best access to services of all wards in the Ballymoney LGD. The mean rank for wards falling in the Ballymoney LGD in terms of proximity to services is just 174.

The **Living Environment Domain** seeks to identify deprivation relating to the environment in which people live, including Housing quality, Housing access, and Outdoor physical environment indicators. Here 4 of the 16 wards fall into the 20% of most deprived in relation to living environment, with Knockaholet ranked 30 falling into the bottom 10%. The highest ranked ward in Ballymoney is Glebe with its rank of 414 placing it in the lower end of the 70-80% bracket of least deprived wards in relation to living environment. The mean rank for wards falling in the Ballymoney LGD in terms of living environment is 222.

The **Crime and Disorder Domain** measures the rate of crime and disorder at small area level. The wards of Ballymoney all rank highly in least deprived areas in terms of Crime and Disorder. Route with a rank of 227 is lowest, placing it at the upper end of the 30-40% bracket. Killoquin Lower with a rank of 566 is the least deprived ward, with only 16 other wards in Northern Ireland being affected less by Crime and Disorder. The mean rank for wards falling in the Ballymoney LGD in terms of Crime and Disorder is 479.

In summary those wards in Ballymoney LGD falling in the top 20% of deprived wards from within each of the 8 domains are illustrated in the following table:

| Wards | Multiple Deprivation Measure | Income Domain | Employment Domain | Health Deprivation and Disability Domain | Education, Skills and Training Domain | Proximity to Services Domain | Living Environment Domain | Crime and Disorder Domain |
|-------|------------------------------|---------------|-------------------|--|---------------------------------------|--|---|---------------------------|
| | | | | | Fairhill, Killoquin Upper and Newhill | Ballyhoe and Corkey, CloghMills, Dunloy, Killoquin Lower, Killoquin Upper, Knockaholet and Stranocum | Ballyhoe and Corkey, Killoquin Upper, Knockaholet and Newhill | |

Crime and Justice

According to the PSNI there were a total of 943 offences recorded in Ballymoney LGD in 2007/08 financial year. This accounts for **0.87% of the total offences that took place in Northern Ireland** in the same time frame. From the table below we can see that **Criminal damage was the most prevalent crime** in Ballymoney LGD with 31.7% of all crimes being of that nature. This is 3.2% higher than the criminal damage rate for Northern Ireland. **Offences against the person was the second most frequently recorded crime** with the level of 24.9% being 2.4% below the Northern Ireland level of 27.3%. Theft at 21.6% is 1.2% lower than in Northern Ireland where it accounts for 22.8% of all crimes committed, while fraud and forgery is comparatively more prevalent in Ballymoney LGD at 4.5% of all offences recorded.

| Summary Comparisons | Ballymoney LGD | Northern Ireland |
|---|----------------|------------------|
| Total offences recorded (2007-08) | 943 | 108,468 |
| % offences against the person (2007-08) | 24.9 | 27.3 |
| % sexual offences (2007-08) | 2.2 | 1.7 |
| % burglary (2007-08) | 10.8 | 10.8 |
| % robbery (2007-08) | 0.3 | 1.1 |
| % theft (2007-08) | 21.6 | 22.8 |
| % fraud and forgery (2007-08) | 4.5 | 2.6 |
| % criminal damage (2007-08) | 31.7 | 28.5 |
| % offences against the state (2007-08) | 0.3 | 1.0 |
| % other offences (2007-08) | 3.6 | 4.3 |

Datasets used: Recorded Crime 2007/08 (PSNI), Bankruptcy Cases Disposed 2005 and Mortgage Cases Disposed 2005 (NI Court Service).

Employment and Economic Activity

According to the Census of Employment, a statutory survey that is conducted every two years in Northern Ireland, there were 7,229 employee jobs in Ballymoney LGD in 2005, some **1.1% of the employee jobs in Northern Ireland**.

In addition there were 715 farms registered to addresses in the Ballymoney area in 2007, which represents **just over 2.7% of the total farms in the Northern Ireland**. Additionally, Ballymoney LGD makes up **2.9% of the total agricultural labour force of Northern Ireland** according to 2007 figures.

| Summary Comparisons | Ballymoney | Northern Ireland |
|--|------------|------------------|
| Employee Jobs (2005) | 7,229 | 683,054 |
| Number of Farms (2007) | 715 | 26,146 |
| Total agricultural labour force (2007) | 1,437 | 48,974 |

Datasets used: Census of Employment 2005 (DETI), Farm Census 2007 (DARD)

Education

As we can see from the table overleaf, **5.7% less of the Ballymoney LGD population has a degree level qualification or higher** when compared with the Northern Ireland level of 15.8%.

The percentage of schools leavers in Ballymoney LGD who gained **5 or more GCSEs at grade C and above in 2006/07 was 0.1% higher than the Northern Ireland level** of 64.7%.

With regards to continuing into higher or further education, 8.6% more Ballymoney school leavers opted for the latter, a trend inverse to that of the Northern Ireland population.

A smaller percentage of the Ballymoney LGD post primary school population is entitled to free school meals than for Northern Ireland, with percentages of 15.4 and 18.9 respectively.

Employment and Economic Activity

Of the population aged between 16 and 74 years of age, **63.6% were economically active**, slightly above the Northern Ireland level of 62.3%

Unemployment levels in Northern Ireland are higher than in Ballymoney LGD, as of the 2001 census, at 3.7% compared to the 4.1% across Northern Ireland. Similarly, the proportion of those **unemployed being long term unemployed is 3.6% lower in Ballymoney LGD** than in Northern Ireland with levels of 36.8% and 40.4% respectively.

In terms of claimed Income Support, **1.4% less of the population in Ballymoney are claimants** when compared to Northern Ireland.

The percentage of persons claiming incapacity benefit is 1.0% higher in Ballymoney than in Northern Ireland.

The percentage of persons claiming housing benefits is lower in Ballymoney LGD than in Northern Ireland, with a difference of 0.5%.

The Census of Employment is a statutory survey that is conducted every two years in Northern Ireland. It provides information on the nature and characteristics of non-agricultural businesses. In 2005 there were 7,229 employee jobs in Ballymoney LGD.

The Inter Departmental Business Register (IDBR) showed there were 1,190 VAT registered Businesses in Ballymoney LGD in 2004.

There were 715 farms registered to addresses in Ballymoney LGD in 2007 and the total agricultural labour force was 1,437 persons.

The size categories of the 715 farms were as follows:

- Very small – 474;
- Small – 111;
- Medium – 57; and
- Large/very large – 73

Median gross weekly earnings in Ballymoney LGD were substantially less than the Northern Ireland average. In 2006 the average weekly wage for Ballymoney was £254.50, £70.20 less than the £324.70 average weekly earnings in Northern Ireland

| Summary Comparisons | Ballymoney LGD | Northern Ireland |
|--|----------------|------------------|
| Census 2001 (Unless stated otherwise) | | |
| % degree level or higher qualifications | 10.1 | 15.8 |
| % economically active | 63.6 | 62.3 |
| % economically inactive | 36.4 | 37.7 |
| % unemployed | 3.7 | 4.1 |
| % of unemployed, who were long term unemployed | 36.8 | 40.4 |
| Administrative Data | | |
| % school leavers gained 5 or more GCSEs at grade C and above (2006-07) | 64.8 | 64.7 |
| % school leavers continued on into higher education (2006-07) | 30.4 | 38.5 |
| % schools leavers continued on into further education (2006-07) | 36.0 | 27.4 |
| % of the post primary school population entitled to free school meals (2006) | 15.4 | 18.9 |
| % of persons claimed Income Support aged 16-59 (2007) | 8.5 | 9.9 |
| % of persons claimed Incapacity Benefit aged 16-59/64 (2007) | 7.6 | 6.6 |
| % of persons claimed Housing Benefit aged 16 and over (2007) | 9.6 | 10.1 |
| Employee jobs (2005) | 7229 | 683054 |
| Median gross weekly earnings all employees (2006) | £254.5 | £324.7 |
| Number of VAT registered businesses (2004) | 1190 | 53830 |
| Number of farms (2007) | 715 | 26,146 |
| Total agricultural labour force (2007) | 1,437 | 48,974 |

Datasets used: Census 2001: KS13 Qualifications and Students, KS09a Economic Activity, Place of residence by area of workplace (NISRA Census Office). Income Support 2004, Incapacity Benefit 2004, Housing Benefit 2007 (DSD), Census of Employment 2005, Annual Survey of Hours and Earnings 2006 and Inter Departmental Business Register 2004 (DETI), Farm Census 2007 (DARD), School Leavers Survey 2006/07 and School Census 2005/06 (DE).

Health and Care

The table below displays a summary of Health and Care information for both Ballymoney LGD and Northern Ireland.

On Census Day 29th April 2001, in Ballymoney LGD:

- 19.6% of people had a limiting long-term illness, health problem or disability;
- 9.4% of the population noted that they provided unpaid care to family, friends, neighbours or others; and

- 70.9% of people stated that their general health was good.

| Summary Comparisons | Ballymoney | Northern Ireland |
|--|------------|------------------|
| Census 2001 | | |
| % people with limiting long-term illness | 19.6 | 20.4 |
| % population provided unpaid care to family, friends, neighbours or others | 9.4 | 11.0 |
| % people stated their health was good | 70.9 | 70.0 |
| Administrative Data | | |
| Hospital episodes (2005-06) | 9622 | 582533 |
| % of children aged 3-5 registered with a dentist (2008) | 71.6 | 60.5 |

Datasets used: Census 2001: KS08 Health and Provision of Unpaid Care (NISRA Census Office). Hospital Episodes 2005/06 and Dental Registrations 2008 (DHSSPS).

We can see that there is a slightly **lower percentage of people with a limiting or long-term illness** in Ballymoney LGD (19.6), 0.8% lower than the Northern Ireland level of 20.4%

The percentage of the population **providing unpaid care to family, friends, neighbours or others is also lower in Ballymoney LGD** than in Northern Ireland, with a 1.6% difference between their respective proportions of 9.4% and 11.0%.

The percentage of residents stating their health was good was almost identical between Ballymoney LGD and Northern Ireland.

1.7% of all 582,533 hospital episodes in Northern Ireland in 2005-06 year took place in Ballymoney LGD.

The percentage of **3-5 year olds registered with a dentist in Ballymoney in 2008 was 11.1% higher** than the level of 60.5% found in Northern Ireland.

Housing and Transport

According to Census 2001 data the 9,635 households in Ballymoney LGD make up 1.5% of the 626,718 households in Northern Ireland. Of these households, 72.6% of them in Ballymoney LGD are owner occupied compared to 69.6% for Northern Ireland. A larger percentage, 35.1% compared to 29.4%, of households are also owned outright in Ballymoney LGD than in Northern Ireland. Rented households are however less prevalent in Ballymoney LGD, 3% less than the figure for Northern Ireland.

Lone Pensioner and lone parent with dependent children households are also less widespread in Ballymoney LGD than in Northern Ireland, with figures falling 0.8 and 1.4% below the Northern Ireland percentages of 12.8 and 8.1 percent respectively.

The average household size in 2001 was 2.77 for Ballymoney LGD, compared to 2.65 for NI.

In 2008 there were 11,463 domestic properties in Ballymoney LGD:

- Terraced – 14.5%
- Apartments – 2.3%
- Semi-Detached – 32.7%
- Detached – 50.5%

Comparing these figures with Northern Ireland levels we can see that there is 14.2% more detached and 7.6% more semi-detached properties in Ballymoney LGD than in Northern Ireland.

As a result, the proportion of terraced housing and apartments fall far below the proportions in Northern Ireland with differences of 16 and 5.8% respectively.

There are projected to be 12,700 households in Ballymoney LGD in the year 2015, with an average household size of 2.46 persons.

The average rates bill for Ballymoney LGD in 2004/05 was £549, compared to £569 for NI. For Ballymoney LGD this represents an increase of 10.7% from 2003/04, compared to an increase of 8.4% for NI.

The average new house price in Ballymoney LGD in 2004/05 was £101,268. This compares to an average of £117,756 for NI the same year.

The 2001 House Conditions Survey showed that 1.5% of all non-decent homes were in Ballymoney LGD.

On Census Day in Ballymoney LGD 81.3% of households had access to a car or van, compared to 73.7% for Northern Ireland.

75.4% of persons aged 16-74 in employment usually travelled to work by car or van. This compares to 70.6% in NI.

In 2005, 13315 cars were licensed to addresses in Ballymoney LGD, 7.6% of which were cars registered to a disabled driver or for transporting disabled people.

| Summary Comparisons | Ballymoney | Northern Ireland |
|--|-------------------|-------------------------|
| Census 2001 unless otherwise stated | | |
| Number of households | 9,635 | 626,718 |
| % owner occupied | 72.6 | 69.6 |
| % rented | 27.4 | 30.4 |
| % owned outright | 35.1 | 29.4 |
| % lone pensioner households | 12.0 | 12.8 |
| % lone parent households with dependent children | 6.7 | 8.1 |
| Average household size | 2.77 | 2.65 |
| % of households who had access to car or van | 81.3 | 73.7 |
| % of persons aged 16-74 in employment who usually travelled to work by car or van | 75.4 | 70.6 |
| Number of domestic properties (2008) | 11,463 | 716,699 |
| % terraced (2008) | 14.5 | 30.5 |
| % apartments (2008) | 2.3 | 8.1 |
| % semi-detached (2008) | 32.7 | 25.1 |
| % detached (2008) | 50.5 | 36.3 |
| Cars were licensed (2005) | 13,315 | 763,663 |
| % of cars registered to a disabled driver or for transporting disabled people (2005) | 7.6 | 8.6 |

Datasets used: Census 2001 (NISRA Census Office), Domestic Properties 2008 (VLA) and Cars Registered 2005 (DVLNI).

How Council contributes to Community Support



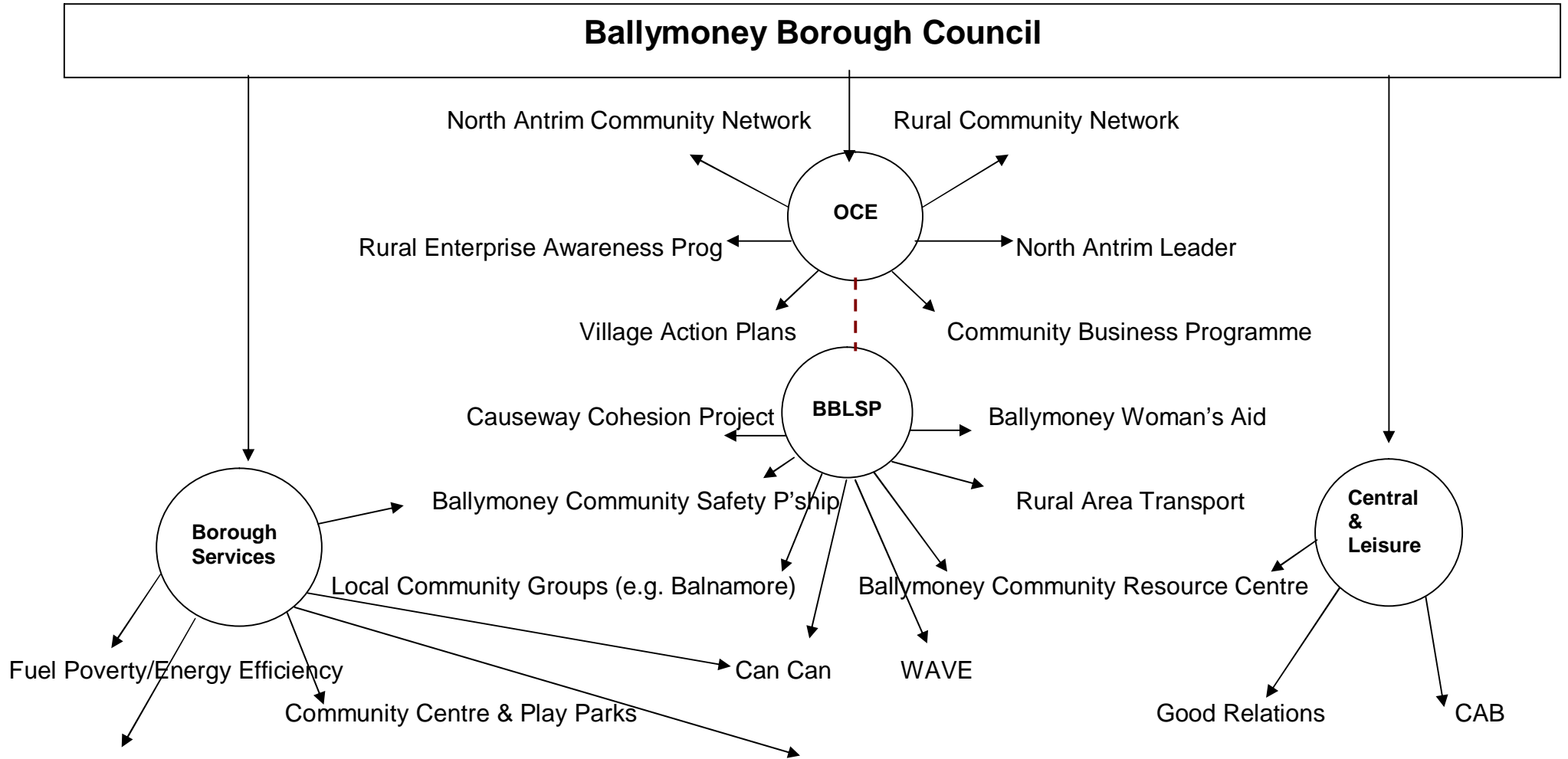
Although co-ordination of the Community Support Plan is delivered through the Central and Leisure Services Directorate, all three Directorates have responsibility for 'Community Services' under the following two themes:

- Community Development
- Community Support

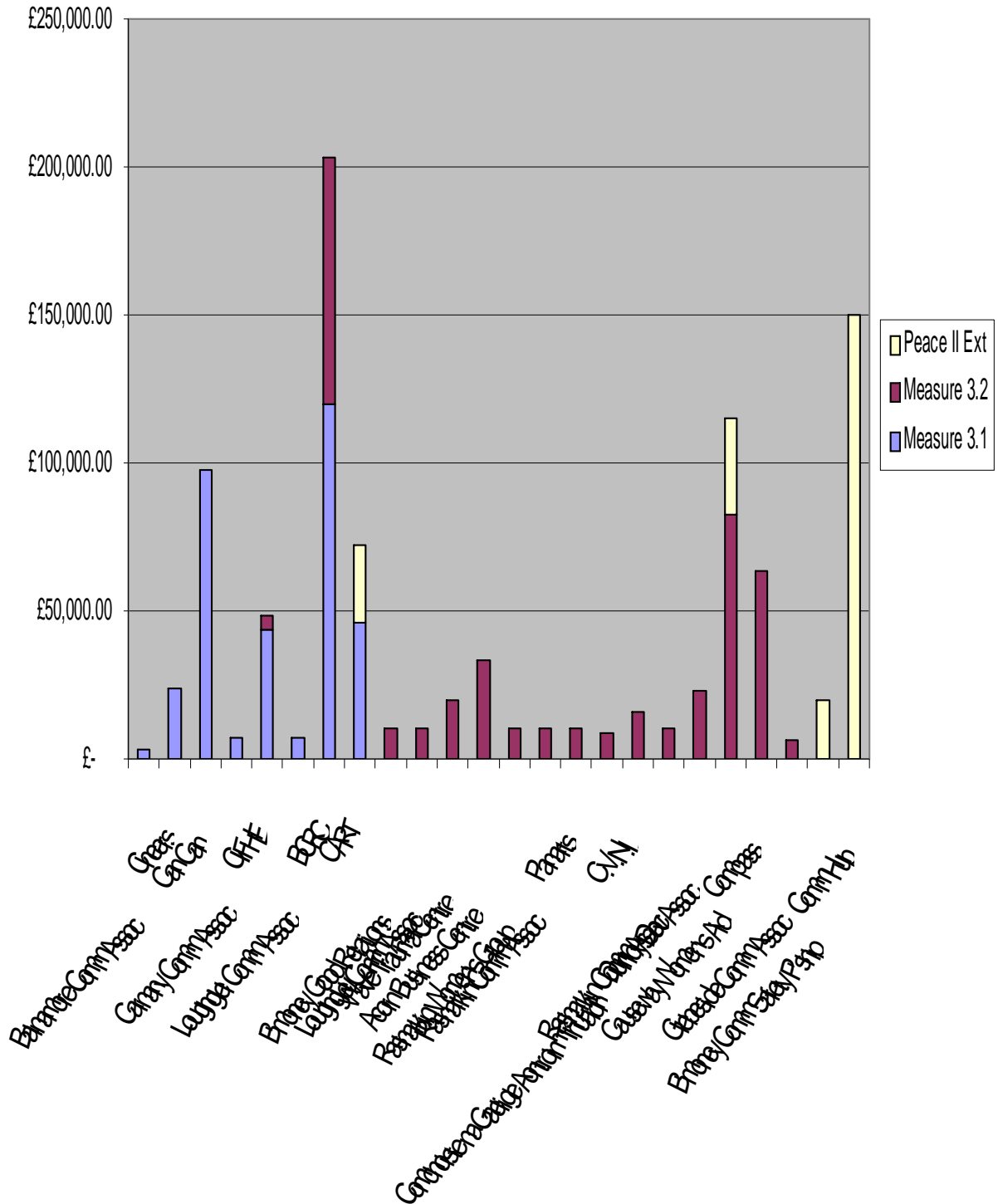
Office of the Chief Executive:

The following activity diagram gives examples of Community Development Support provided by the Office of the Chief Executive and provides an indication of the synergistic nature of the support provided to community groups across all three Council directorates.

Borough Community Development Activity Tree



Community Development Support Awarded through the EU part-financed PEACE Programme;
2001 to Date



Through its Economic Development function the OCE provides local community groups with:

- Information on sources of finance for start up or expansion of a small business
- Advice to social economy agencies and businesses
- Access to a range of business development programmes for the owners and managers of local firms.

Examples of projects assisted directly by the OCE include:

- Capacity development of community groups and project identification
- Skills analysis gap identification
- Engaging commercial companies in assisting in the development of small companies
- Development of Cardinal Daly's birthplace
- Establishment of Rural Development Partnership
- Provision of IT facilities in community group premises
- Rural education classes
- Local community association project support including Council providing support for project group and funding (OCE) for business units and (Leisure) for environmental improvement works
- Cross-community projects identification
- Provision of computer training facilities for community learning
- Feasibility study for crèche provision
- Feasibility study for tourist/heritage centre
- Feasibility study for community centre
- Feasibility Study for development of Community Hub
- Production of business plan and contribution to development of a community house in Carnany (deprived ward in town centre)
- Community mentoring scheme to develop community businesses
- Development of tele-services centre
- Delivery of community empowerment programme
- Gardening and maintenance project – promoting economic development and alleviating unemployment in a TSN Ward in borough (Ballyhoe/Corkey)

Central and Leisure Services Directorate:

The Council's Central and Leisure Services Directorate has responsibility for a number of programmes which impact significantly on Community Support and Development within the Borough. Programmes such as Good Relations, Sports Development and Cultural Services contribute greatly to building community infrastructure and supporting communities to develop and prosper.

Outlined below are the programmes/projects which the Central and Leisure Services Directorate has responsibility for which relate directly to this Strategy and the fundamental contribution which they make to Community Services within the Borough:

Leisure Facilities

The Directorate is responsible for the management of Joey Dunlop Leisure Centre, its premier leisure facility. The Centre offers an extensive range of activities and schemes throughout the year. With various clubs and other voluntary organisations meeting regularly within the centre.

Community Sport Programme

Funding from Sport NI and the Big Lottery Fund in March 2005 secured the appointment of a fulltime “Community Sport Project Officer” employed by Ballymoney Borough Council in the Sports Development Unit.

Initially for a period of three years through the ‘Community Sport Programme’ this position was extended for a further two-year term until March 2010 with funding secured through the ‘Sport in our Community’ fund.

Since March 2005 an annual programme of activities has been delivered following consultation with the key community associations and key stakeholders of the Borough. This consultation takes place on an annual basis with each community association involved in the programme.

A partnership approach with the Community Association ensures that many of the traditional barriers to participation are broken down and participants are afforded the opportunity to take part in sport and physical activity in their own community setting at a low cost.

The Community Sport Programme uses sport and physical activity as a medium through which to develop:

- Participation rates amongst marginalised groups
- Coach and Volunteer Training and Education Opportunities
- Health and Well Being
- Personal Development Programmes
- Diversionary Learning Programmes
- Community Infrastructures
- Employment
- Community Relations
- Community Cohesion
- Sustainable structures for sport & physical activity participation

Midnight Soccer League

Funded by the Community Safety Partnership this cross community Soccer league was aimed at bridging the divide between the youth from different religious backgrounds in the Borough acting as a diversion to those vulnerable to anti social behaviour. A total of 5 Community Associations were involved in the project aimed at those aged 15-17. The PSNI delivered an Anti-Social Workshop during this programme.

Friendship League Soccer

Involving 12 teams and up to 200 Primary School age children the friendship league develops participation rates amongst young boys and girls in a cross community setting.

Good Relations Programme

Ballymoney Borough Council first became a participant in the District Council’s Community Relations Programme in the early 1990s. Since then Ballymoney Borough Council has delivered a programme that has sought to enhance relations within and between communities within Ballymoney.

A Good Relations Officer has been employed throughout this time whose role has been to work closely with other statutory agencies and with the local community and voluntary sector to achieve community relations goals.

The Council has endeavoured to provide a programme aimed at allowing communities to examine Community Relations issues and at bringing the community together through the provision of opportunities to examine the wide cultural diversity, which exists in the Borough. The programme has led to:

- ❑ The establishment and support of community groups across the Borough;
- ❑ The organisation of a programme of events aimed at improving the understanding of cultural diversity;
- ❑ Capacity building training to enable groups to contribute to community relations work;
- ❑ The introduction of a small grants scheme with the aim of encouraging groups to undertake cross-community/single identity projects with a Community Relations theme;
- ❑ Supporting a range of Partnerships and Forums, which contribute to Community Relations objectives, within and across a range of sectors;
- ❑ Close liaison with other related strategic initiatives including Community Safety and Community Support.

Ballymoney Borough Council believes that the Good Relations Strategy is beneficial to the Council in that:

- ❑ It is central to the Council's strategic objectives;
- ❑ It demonstrates Council's commitment to enhance civic leadership;
- ❑ It re-emphasises the importance Council places upon Good Relations;
- ❑ It enhances Council's commitment to fulfilment of Section 75 of the Northern Ireland Act 1998;
- ❑ It provides a context in which positive approaches can be applied to sensitive Good Relations issues;

The Good Relations Strategy enables Council to continue to take account of the needs and demands of all communities whilst addressing divisions and diversity and seeking to attract additional funding from other agencies to enhance the image of the Borough and encourage potential investment.

Tourism & Event Management

The Central & Leisure Services Directorate, with technical support from Borough Services, is responsible for organising annually, two major cross community events – Ballymoney Mayor's Show and the Christmas Lights Switch On Entertainment Programme. Both these events are important in generating a sense of civic pride and community spirit.

The Mayor's Show offers local community, voluntary and business organisations the opportunity to participate in the event by entering a float in the parade. Local cultural groups have also in previous years, taken part in the entertainment programme.

In these times, as Northern Ireland begins to move towards a more peaceful society, tourism growth is a future reality.

Due to a growing interest in activity holidays and a greater desire to learn about people and culture environmental improvement and community development are two such issues which will increase tourism opportunities. A co-ordinated approach between community groups, participants of the hospitality and tourism industry are vital to meet new demands and deal with new challenges. The importance of tourism to the local economy should not be underestimated and the positive image portrayed of the Borough makes the local residents proud of their area.

Museum Services

Causeway Museums Service Community Outreach Project

The CMS Community Outreach Project commenced in 2005 and has proved an exciting opportunity to build awareness, appreciation and positive engagement in local heritage. The project was co-ordinated by the CMS Outreach Officer, in collaboration with the Ballymoney Borough Council Museum Manager and Museum Assistant. The project is supported by the Heritage Lottery Fund.

The project's overall aims have been to deliver museum skills within the community, building community capacity to communicate and present their own heritage. It has focused on five key projects spread throughout the Causeway area.

A regional network has provided opportunities for sharing knowledge and skills and encouraged groups to participate in the future development of the Causeway Museums Service outreach programmes.

Community Outreach Project in Ballymoney

The objectives of this project has been to:

- Take museum skills out in to communities;
- Increase awareness and access to local stories;
- Produce the local history exhibition, "I mind when..."

Exhibitions, talks and events

Ballymoney Museum runs a programme of temporary exhibitions, which regularly involves input from local stakeholders including collectors, public institutions or community groups from the Ballymoney Borough Council and Causeway Museum Service area. These have included such diverse groups as:

- The Ballymoney Agricultural Show Committee
- The Ballymoney Drama Festival
- The Coleraine & District Motor Club and North West 200
- Ballymoney Photographic Club
- Irish Woodturners Guild
- Students from the University of Ulster, Coleraine
- Somme Association

The museum has contributed to major community initiatives by other an on-going programme of local reminiscence evenings is proving very successful and has resulted in the establishment of an oral history archive.

Education

Ballymoney Museum regularly engages with schools in the Borough by providing important curriculum resources for use in the classroom and facilitating tours of the museum. Since the Town Hall re-opened after re-development, the museum has organised bi-annual education activity weeks which attract up to 160-180 pupils from local primary schools.

In recent years, popular school outreach workshops have also been provided on themes such as World War II and George Shiels.

A Community Arts Service

Grant Scheme

Ballymoney Borough Arts Committee administers on behalf of the Council, a small grants scheme to support local organisations and individuals in the development and promotion of the arts within the Ballymoney Borough.

Grants are available for groups as follows:

- Deficit funding guarantees for events or projects up to £200 and no more than 50% of the deficit.
- Grants up to £200 are available to groups who want to organise a new event or to introduce a new, developmental element to an existing event.
- Grants up to £200 are available for groups who through a high level of competition have been selected to compete or participate in an arts activity at provincial, national or international level.

Grants of up to £50 are available to individuals who through a high level of competition have been selected to participate in an arts activity at provincial, national or international level.

Groups can also apply to the Good Relations Grant Scheme for support for community arts projects, which clearly meet the objectives of the programme.

Community Courses

Ballymoney Borough Arts Committee offer in conjunction with the Northern Regional College, a programme of recreational courses including creative writing, calligraphy, patchwork and painting. The college's Community Education Department works collaboratively with over 70 community and statutory organisations to deliver diverse programmes of accredited and non-accredited courses, which are built around local needs and interests.

Borough Services Directorate:

The Borough Services Directorate makes a significant contribution both in terms of Community Development and Community Support. The Directorates remit encompasses – Amenities (including estate management), Building Control, Environmental Health & Community Safety and Environmental Services.

A range of services and interventions are provided which impact daily on the lives of those living, working or visiting the Borough. Community Development and Support are seen as an integral part of services delivered. The contribution made to Community Development and Community Support is dealt with under the following heads –

1. Community Capacity
2. Community Infrastructure
3. Community Wellbeing

1. Community Capacity

The Directorate adds value to service provision by seeking opportunities to build capacity within the Community. This is achieved in a number of ways.

Structured, nationally recognised training courses in food hygiene and health and safety are offered. The CIEH Foundation Certificate in Food Hygiene, update courses, level 2 awards in Food Safety in Catering and level 3 awards in Implementing Food Safety Management Procedures are offered, as is a level 2 qualification in Health and Safety in the Workplace. Staff within the Directorate are also qualified to deliver the CIEH Certificate in Environmental Awareness.

Informal talks are given to a number of interest groups to raise awareness on matters which fall within the Directorates remit, such as, waste management and recycling, sustainable development, etc

The Directorate provides information on various initiatives through press releases, leaflets, and the Council's website and where necessary targets specific groups. A current initiative on home safety, has included an element of training of community volunteers to carry out home safety checks prior to the distribution of safety equipment. An information day in conjunction with Ballymoney Home Accident Prevention Committee and other relevant partners on topics such as slips and falls, personal safety and wellbeing targeting the elderly has been held and future initiatives are planned.

A number of awareness raising sessions regarding home energy efficiency measures including accessing grants have been and will be held at various locations in the Borough as part of the campaign to tackle fuel poverty.

Additionally, given the Directorate's licensing and enforcement functions it will readily engage with requestees on a one-to-one basis to advise on a case-by-case basis.

2. Community Infrastructure

- Council has provided at both the Town Hall and Social Centre in Ballymoney bookable venue facilities for community use.
- It has also to date provided Community Centres at Ballybogey, Killyrammer and Rasharkin. Substantial community facilities are in the planning phase as regards both Cloughmills and Dervock.
- Drumaheglis Marina & Caravan Park is the Boroughs primary tourist development and offers not only public access to the River Bann but also a number of other facilities much valued by both Borough visitors and residents.

- Council manages extensive public open space at both of its Riverside Parks in Ballymoney and Dervock and a smaller facility at Carnany.
- Play Areas have been provided at Ballybogey, Ballyknock, Ballymoney [Carnany [2], Glebeside, Megaw Park, Riverside Park, Seymour Drive and Westgate], Balnamore, Ballyknock, Ballynagarvey, Bendooragh, Benvista, Clontyfinnan, Cloughmills, Dervock, Drumaheglis, Dunaghy, Dunloy, Fernbank, Finvoy, Lislagan, Loughgiel [Millennium Centre & Scally Park], Killyrammer, Macfin, Magherahoney, Rasharkin, Rockend, Seacon and Stranocum.
- There are sports pitches and associated changing facilities at the following locations – Balnamore, Dunaghy, Dunloy, Dervock, Megaw Park, Rasharkin and Riada Playing Fields.
- Riada Stadium, recently completed by Council, is a prestigious multi-purpose and sports arena.
- Public toilets are available at Castle Street, Riverside Park and Townhead Street, Ballymoney, Cloughmills and Rasharkin.
- Extensive waste management and recycling facilities are located at both Knock Road and Crosstagherty Road, Ballymoney.
- Mixed Waste and Mixed Dry Recyclates are collected on an alternate weekly basis from the 12,200 homes in the Borough. Bulky household waste is also collected from individual homes on request. In addition Council provides an assisted persons scheme.
- A trade waste service is also provided to the Borough's commercial and industrial sector.
- Community Recycling Centres are situated at Ballybogey, Balnamore, Cloughmills, Dervock, Dunloy, Killyrammer, Loughgiel, Rasharkin, Stranocum and at Glebeside Spar, Milltown Spar, Tesco and Trolans SuperValue.
- Council is also supportive of Can Can Recycling a community recycling initiative to assist people with learning disabilities.
- Street cleansing services are provided to ensure that the Borough is kept litter free.
- In addition to the public cemeteries at Ballymoney and Rasharkin, Council maintains a number of other graveyards.
- Bus shelters have been provided at 40 locations throughout the Borough.
- Council, in partnership with other agencies, is delivering improvements to the National Cycling Network within the Borough and is promoting a Connect2 project to bridge the railway at the station and so directly connect the town's commercial core with Ballymoney South.

- Various initiatives have and are being pursued to improve the bio-diversity of the Council's estate and also to promote access to the countryside and a healthier lifestyle, including an annual walks programme.
- A support service is provided to community groups and other organisations offering event set-up advice and also technical and practical help with events, including the preparation of facilities and the set up and take down of equipment. Equipment is also made available from the Directorate's resources pool.
- A Festive Lighting Scheme for Ballymoney town, together with Christmas trees and lighting provision to 12 Borough communities, is co-ordinated annually.
- Building Control services ensure that the build environment within the Borough complies with the regulatory standard. The postal numbering and street naming services ensure that property is readily identifiable.
- The Directorate is also the Council's lead on local emergency planning co-ordination and response issues.

3. Community Wellbeing

In addition to the traditional enforcement aspect of the Directorate's work, considerable resources are dedicated towards implementing the Northern Health Trust's Investing for Health Programme. Funding has been secured for the employment of a Fuel Poverty Strategy Co-ordinator (the only such post in Northern Ireland) together with an Energy Efficiency Worker and a Home Safety Officer. Although these posts are shared with a number of other Councils, they are based within Ballymoney. The appointments have allowed a more focused approach to tackling both these areas of intervention locally.

Ballymoney Warmer Homes Group

The Warmer Homes Group has championed the cause of effectively tackling fuel poverty within the Borough. One of the initiatives undertaken has been the setting up and promotion of a fuel stamp scheme under the logo of 'stamp out the cold'. The scheme has been a tremendous success with over £30,000 worth of stamps being sold within the first 12 months. Due to the increasing diversity of the Borough's population information on the fuel stamp scheme has been translated into seven languages. A number of other authorities have introduced similar schemes following the best practice set by the Directorate.

Energy efficiency awareness training is also delivered to both the statutory and community/voluntary sector on a regular basis annually.

Ballymoney Home Accident Prevention Committee

Hazard House is a unique home accident prevention initiative established by a partnership led by the Directorate. The former Housing Executive home comprises a number of domestic safety scenarios. The various scenarios presented are used by trained staff to raise home accident prevention awareness. Through the Home Safety Officer and with funding from the Northern Investing for Health Partnership, a home safety equipment scheme is to be delivered across the Borough aimed at those families with children less than five years. A training programme has already been completed which included recruited volunteers from within the community to carry out home safety assessments prior to the distribution of equipment.

Community Safety

Funding from the Northern Ireland Office has allowed the appointment of a Community Safety Co-ordinator for a period of 3 years. The Co-ordinator has overseen the production of a local Community Safety Strategy based on local need. From this, a number of specific projects were identified to be delivered by local groups /agencies. Over the past three years the following projects have been delivered or are currently ongoing.

Vehicle Crime Awareness

Tackling theft from vehicles is a key component of the Government's strategy to drive down car crime. Based on information and evidence from the police, the Community Safety Unit launched in November 2004 a public information campaign to highlight the threat of theft from vehicles. The key message being promoted by this awareness campaign is "if they see it, they'll steal it". This campaign is run for several weeks each year.

Schools Liaison

The Directorate has participated with the NEELB Schools Liaison Officer with the launch of the Boards Schools Directory that identifies resources and skills within the area of the Directorates responsibility and how these may be utilised within various parts of the schools curriculum.

Review of Other Community Provision

The following table gives a summary of the resourcing provided by other agencies. This information is important to the Council in terms of a joined-up approach to service delivery. The information will allow the Council to identify gaps in service provision and opportunities to build partnerships with others involved in the provision of community development support.

| Organisation | Description of Community Support Services |
|--------------------------------|---|
| Causeway Volunteer Centre | The Causeway Volunteer Centre aims to raise the profile of volunteering by highlighting the benefits of volunteering to individuals, organisations and the wider community. The Centre actively recruits more people to do voluntary work, and also supports community and voluntary organisations by advising on how to recruit, manage, develop and support volunteers and general volunteering good practice. Also, the Centre runs a small grants programme (funded by Department of Social Development) aimed at helping organisations with volunteers costs. Causeway Volunteer Centre works with organisations and individuals in Ballymoney Town and in the surrounding villages and rural area. |
| Coleraine Area Rural Transport | The organisation provides a low cost, accessible community transport service to the community groups and individuals living in the Boroughs of Coleraine and Ballymoney. |

| Organisation | Description of Community Support Services |
|---|--|
| Arts Council of Northern Ireland | <p>The Arts Council of Northern Ireland is the prime distributor of public support for the arts.</p> <p>Its main functions are:</p> <ul style="list-style-type: none"> ▪ To develop and improve the knowledge, appreciation and practice of the arts ▪ To increase public access to, and participation in, the arts ▪ To encourage and assist the provision of arts facilities and events and co-ordination and efficient use of resources for the arts |
| Community Foundation for Northern Ireland | <p>The Community Foundation for Northern Ireland's mission is to improve the quality of life through enabling communities to tackle social need and divisions by:</p> <ul style="list-style-type: none"> ▪ Funding and supporting community-based action ▪ Raising funds from a wide range of donors who wish to support and be associated with this work ▪ Policy/Publications drawing on collective experience, research and evaluation, to influence policy development. |
| Community Relations Council | <p>The Community Relations Council provides grant aid and advice to voluntary and community groups in support of projects, which have a good relations purpose or value.</p> |
| Office of the First Minister and Deputy First Minister's Community Relations Unit | <p>OFMDFM provide funding guidance and support to Borough Councils within Northern Ireland to provide a Borough Council Good Relations Programme.</p> <ul style="list-style-type: none"> ▪ To increase cross-community contact and co-operation ▪ To encourage mutual respect, understanding and appreciation of cultural diversity. <p>Since 1989, the Borough Council's Good Relations Programme (DCCRP) has been developed to support local Good Relations initiatives. Financial support at 75% of eligible expenditure is available to Borough councils, including contribution towards the salaries of Good Relations Officers.</p> <p>The department has recently launched the "Shared Future" document, which outlines the proposed direction for Good Relations for the foreseeable future.</p> |
| Department of Agriculture & Rural Development (DARD) | <p>DARD's main objective is "to promote economic growth and the development of the countryside in Northern Ireland. It will assist the competitive development of the agri-food, fishing and forestry sectors of the NI economy, being responsive to the needs of consumers for safe and wholesome food, the welfare of animals and the conservation of the environment."</p> |
| Department for Social Development (DSD) | <p>DSD has its office at the Gasworks Business Park, Belfast and supports district councils through the Voluntary and Community Unit (VCU) in the development of their Community Support Plans through its Community Support Programme.</p> |
| Northern Ireland Council for Voluntary Action | <p>44 people are employed, working across three main areas developing the policy agenda, developing the voluntary and community sector and developing NICVA - the organisation.</p> |

| Organisation | Description of Community Support Services |
|--|---|
| (NICVA) | NICVA's office in Belfast provides a resource centre for community groups, including conference facilities and interpretative space. |
| Police Service of Northern Ireland (PSNI) | <p>Ballymoney DCU Commander</p> <p>"Ballymoney Borough Command Unit is committed to working in consultation and partnership with various other agencies and groups within the Ballymoney area. Our overall objective as a Borough Command Unit is to focus police activity on tackling crime and associated issues, which affect people in our community. By ensuring effective partnership arrangements with the support of the community, this has enhanced our ability to provide a professional and progressive Police service for all of the people in the Borough. We meet on a regular basis with our partners, sharing information, ideas and good practice.</p> <p>Together with our partners we can make Ballymoney Borough a safe environment to work, live, visit and socialise</p> |
| <p>Northern Health & Social Services Board</p> <p>Mr Edmond McClean Director of Strategic Planning & Commissioning County Hall Ballymena</p> | <ul style="list-style-type: none"> ▪ Health Action Zone funded through NHSSB (includes Glebeside in Ballymoney) Three key themes of work includes improving access to services & facilities, promoting positive mental health & wellbeing and improving opportunities for education & empowerment. ▪ Through the Northern Drugs & Alcohol Co-Ordination Team's Local Action Plan, treatment services for adults & young people, targeted education and prevention services, training services, community family support and accommodation services are provided on a NHSSB-wide basis (includes Ballymoney area) – 'Mini Directory of Substance Misuse Services within the NHSSB area' is available to download from NHSSB website at www.nhssb.n-i.nhs.uk/partnerships/ndact.php ▪ Through Northern Tobacco Control Group (NTCG), supports delivery of smoking cessation initiatives and specialist cessation training in order to help adults, young people and pregnant smokers stop smoking. NTCG funded smoke-free seminars - scheduled for delivery via Northern Group Systems in Ballymoney area. NTCG produces an annual action plan with associated funding application process – available to download from www.nhssbtcg.co.uk ▪ A Home Safety officer has been jointly appointed between the Northern Board and Ballymoney, Coleraine and Moyle Councils to build local networks between the statutory, voluntary and community sectors to take forward joint actions that will help support vulnerable people who are at |

| Organisation | Description of Community Support Services |
|---------------------------|---|
| | <p>risk of experiencing an accident in their home.</p> <ul style="list-style-type: none"> ▪ A Fuel Poverty Co-ordinator has been appointed to support the local Ballymoney Fuel poverty Steering group take forward actions to help ensure that vulnerable people are accessing support that will ensure their homes are heated adequately. ▪ An Advice4Health worker has been appointed to work with health and social care professionals across the Causeway Trust area to ensure vulnerable clients are accessing their full benefit entitlement. Specific clinics are held on the Route hospital site and the Armour Day Centre in Ballymoney on a weekly basis. ▪ Northern Health and Social Services Board leads the Inter-agency Northern Area Children and Young People's Committee. This Committee is responsible for setting out a strategic direction for all services for children in need and vulnerable children. The work is carried out by a number of sub-groups each addressing the needs of a particular group of children such as those at risk of abuse, those with poor school attendance, those who are at risk of offending behaviour etc. This work has also led to the introduction of a number of innovative new projects as well as aligning existing services to the needs identified. Further details can be found on the website www.northernchildrensservices.org |
| Supporting Communities NI | <p>'Helping Communities help themselves'</p> <p>Supporting Communities is an independent body, which aims to achieve meaningful community participation in the social, housing sector by developing groups and promoting effective involvement.</p> <p>Areas of work:</p> <ul style="list-style-type: none"> ❑ Community Development work & Training ❑ Housing Community Network ❑ Good Practice Sharing ❑ Administration & Policy Issues ❑ Funding, Information & advice <p>SCNI objectives are to assist groups in the development of projects relating to economic, environmental, social and housing issues.</p> <p>Promote Community Development Provides support to community groups Liaises with statutory / voluntary agencies Facilitates liaison between NIHE and community groups</p> |

| Organisation | Description of Community Support Services |
|--|---|
| <p>NEELB youth service</p> | <p>The NEELB youth service supports youth organisations in their delivery of youth work by providing training, support and development. Youth organisations that are eligible to register with the NEELB youth service also benefits form the financial schemes that the board can offer. Groups will receive an annual grant and can also apply for other financial assistance form the following schemes; Annual camp, youth exchange and the youth service Good Relations support scheme.</p> <p>Youth leaders can avail of a variety of levels of training in Good Relations work.</p> <p>The NEELB youth service develops resources that are used to assist leaders in their work in the promotion of personal and social development of the young person. The NEELB youth seeks out effective partnerships to meet local needs.</p> <p>The NEELB youth service values the contribution of the many youth organisations in the Ballymoney area that are striving to deliver quality programmes to the many young people who attend.</p> |
| <p>Ballymoney Community Resource Centre Unit 1 Doltone Business Park 25 Ballymena Road Ballymoney BT53 7EX</p> <p>Tel: 028 2766 5068</p> | <p>Ballymoney Community Resource Centre (BCRC) employs a full-time Co-ordinator and an Administrator to provide support to a network for community and voluntary organisations; advice, guidance and information on community development issues, projects and funding; focussed support to areas identified as having weak community infrastructure.</p> <p>Also employed on a part-time basis is a Disability Programme Officer for Ballymoney Borough and an Ethnic Minorities Worker. These projects respond to the drop in needs of individuals, co-ordinate events and information sessions provide pertinent information and work in tandem with wider developments within each particular discipline.</p> <p>Project Aims and Objectives:</p> <ul style="list-style-type: none"> • To promote community development and networking • Promotion and facilitation of relevant training and capacity building programmes to increase capacity and sustainability • To provide relevant, accessible information to community and voluntary groups to aid the advancement of their community and work • Provide a link to policy and decision making at local and regional level • Identify new and emerging community needs and deliver Ethnic Minorities Support programme for Ballymoney Borough • Continue to manage, develop and expand the Ballymoney Disability Programme into wider Causeway area • To assist and lobby for youth service provision |

Prioritisation of Needs

Community Support Plan Vision

The vision for Ballymoney Borough Council's Community Support Plan is:

"To support the underpinning of a vibrant community that will enhance civic pride and impact positively on economic development and environmental sustainability"

Aims and Objectives 2009-11

The aims and objectives of Ballymoney Borough Council's Community Support Plan for 2009-11 addresses the following priority:

- **Resourcing the Community and Voluntary Sector**

| Strategic Priority | Aims & Objectives |
|--|--|
| Resourcing the Community / Voluntary Sector Aim – To make effective use of available funding, people, buildings and other resources to obtain best value for the sector | Provision of funding to Citizens Advice Bureau |
| | Community Centre Provision |

Proposed Performance Indicators

The Department for Social Development in February 2004 issued a Discussion Paper on Performance Indicators linked to the new Community Support Programme. These are still in review however the following performance indicators have been used to date and it is proposed that these will be used as output measures for the 2009-11 Community Support Plan. They are as follows:

- Yearly profile and usage of community and resource centres per 1,000 population.
- Number of advice enquiries addressed through funded advice and the amount of additional benefit entitlement successfully claimed.

Managing the Community Support Plan



Managing the Plan

Ballymoney Borough Council through a co-ordinated approach will keep the Community Support Plan under continual review.

Reviewing the Plan

Ballymoney Borough Council will quantify and qualify the results in its monitoring and evaluation process.

Resources for Implementation



The Community Support Plan will require revenue and capital expenditure, if the programme of work associated with the plan is to be completed in full.

Action Plan

| Strategic Priority 3: Resourcing the Sector | | | | | |
|--|---|--|----------|---|-----------|
| To review efficiency of community services grant allocation for 2007-2008. | | | | | |
| Issue | What | Delivery | Partners | Outcomes / Impacts | Timescale |
| Advice Centre Funding | To more efficiently manage Council's support to the advice sector in Ballymoney | Central & Leisure Services Directorate | CAB | <ul style="list-style-type: none"> More accountability for public funds Improved service reflecting rural community needs Improved monitoring of service | Ongoing |

| Strategic Priority 3: Resourcing the Sector | | | | | |
|---|--|--|-----------------------------|---|-----------|
| Continue to service Council owned community centre venues | | | | | |
| Issue | What | Delivery | Partners | Outcomes / Impacts | Timescale |
| Maintain Council owned centres | To provide and maintain community centre venues within the Ballymoney Borough. | Central & Leisure Services Directorate | Borough Services Department | <ul style="list-style-type: none"> Provision of facilities Increased activities within each village Building capacity of community | Ongoing |

For further details, please contact:

Ballymoney Town Hall

1 Townhead Street

Ballymoney

Co Antrim

BT53 6BE

Tel: 028 276 60233

Email: claire.crawford@ballymoney.gov.uk